

## E200

Isolator for panel installation onto DIN rail acc. to DIN EN 60715

Mounting depth: 70mm  
 Mounting width: per pole = 17,5mm = 1 module  
 Colour: grey, RAL 7035  
 Colour of switch lever: red RAL 3000 (r); grey RAL 7000 (g)

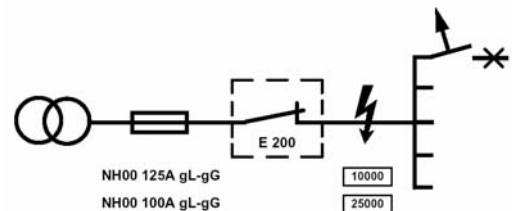
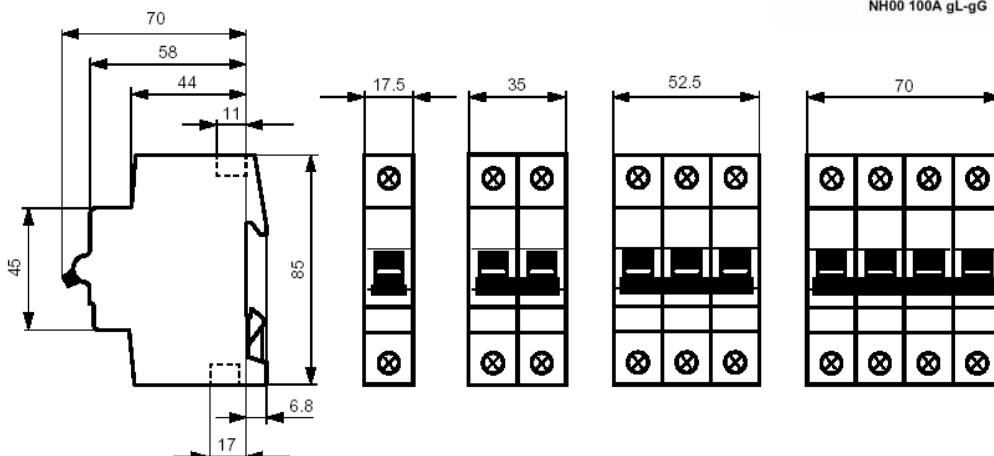
### Special features

- Fast removal without dismantling of the busbar
- Captive screws with recessed/slotted head, Pozidriv size 2
- Add-on of up to 3 auxiliary contact S2C-H6R possible
- Integrated lay-on edge for labeling system ILS
- Locking device as accessories for unauthorized ON/OFF
- Approval: VDE, CCC further under preparation

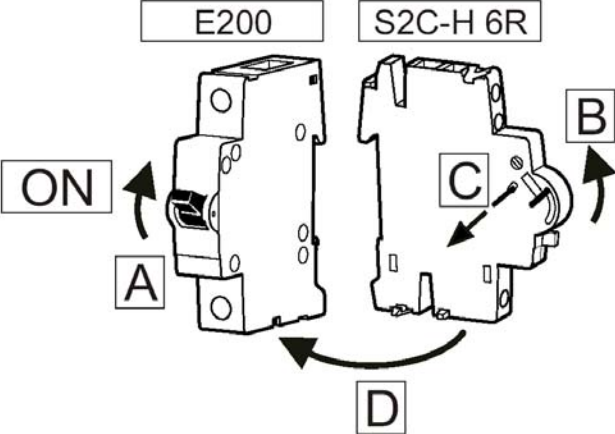
### Technical data

Switching capacity:	1,25 x I <sub>n</sub> ; 1,1 x U <sub>n</sub> ; cos φ = 0,3 acc. to DIN VDE 0632 AC22-A / AC23-A acc. to VDE 0660 part 107, DIN EN 60947-3 resp. IEC 947-3 DC21-A for applications up to 60V DC
Positive opening:	acc. to DIN VDE 0113
Short-circuit withstand capacity:	25kA <sub>eff</sub> in series with NH 00 100A gL-gG 10kA <sub>eff</sub> in series with NH 00 125A gL-gG
Rated voltage:	230/400V AC; 50/60Hz
Surge withstand capability U <sub>imp</sub> :	4kV acc. to EN 60947-1
Ambient temperature:	-25°C to +55°C
Storage temperature:	-40°C to +70°C
Climatic resistance:	constant climate 23/83, 40/93, 55/20 [°C/RH] Alternating climate 25/95 – 40/93 [°C/RH] optional
Mounting position:	optional
Degree of protection:	IPXX B (with add. task), IP 40 in panelboard
Mechanical endurance:	40.000 switching cycles
Electrical endurance:	2.000 switching cycles
Min. voltage:	12V AC/DC at 0,1VA
Min. contact loading:	24V/4mA
Wire range:	2,5 to 50mm <sup>2</sup>
Torque:	5Nm

### dimension in mm



Add-on of auxiliary contact



**ABB internal only for information**